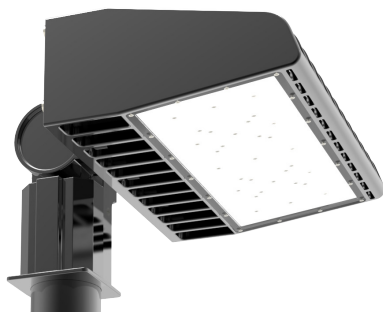


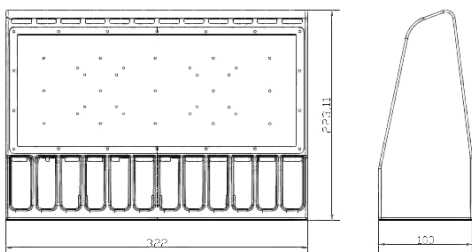
GLEDSB3C-150W

SPECIFICATIONS

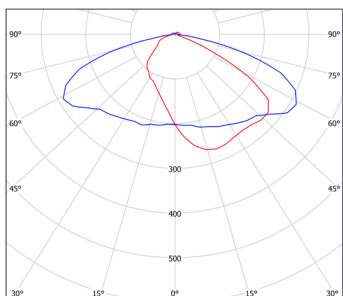


Dimensions:

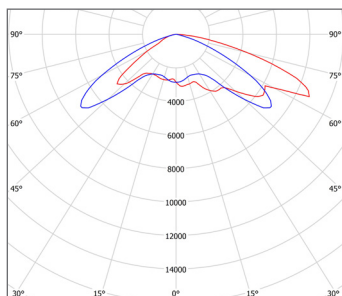
Length: 8.78in (223.11mm) Width: 12.68in (322mm) Height: 3.94in (100mm)



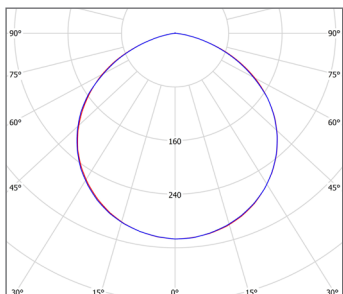
Photometrics:



Type III



Type IV



Type V

Optical Details:

System Efficacy	Up to 140 Lm/W (CCT = 5700K)
Lumen Output	19,500 Lumens (CCT = 5700K)
CCT	3000K, 3500K, 4000K, 4500K, 5000K, 5700K
CRI	≥ 70 Ra

Electrical Details:

Input Voltage	AC 100~277 Volts
Power Frequency	50/60 Hz
Power Factor	0.9
Total Harmonic Distortion	14%
Dimming Function	1-10V Continuous Dimming

Other Details:

System Power Usage	150 Watts
Fixture Material	PC and Aluminum
Ingress Protection	IP65 Weatherproof
Lifespan	≥ 100,000 Hours
Product Dimensions	8.78 x 12.68 x 3.94in (223.11 x 322 x 100mm)

PART NUMBER KEY:

GLEDSB3C - 150W - CCT

- 3000K
- 3500K
- 4000K
- 4500K
- 5000K
- 5700K

Example Part Number: GLEDSB3-150W-3000K