



**GLOBAL LINK™ SMART**  
ACTIVE ENERGY SAVINGS

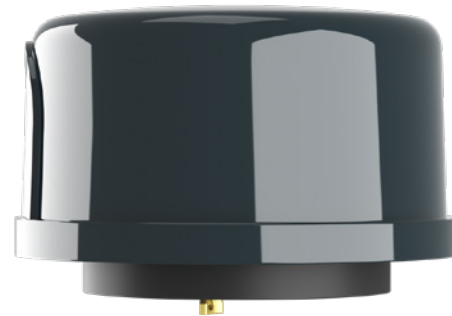
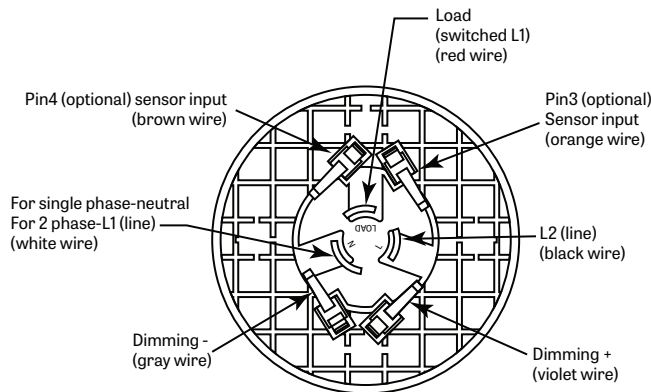
► **Global Link Smart Plug & Play Wireless Lighting Controller**

The GlobalLink Smart NEMA Lighting Controller is an intelligent wireless network connected lighting controller with dimming, ON/OFF switching, utility grade energy metering, remote monitoring/management, sensor input capabilities and more. MS-CN-160 has exceptional fault tolerance and control persistency with constant status and health monitoring of your lighting fixtures. Easy installation on ANSI 136.41 5/7-pin dimming receptacle (NEMA receptacle).

► **Features**

- Photocell in every controller (optional)
- Remote control, scheduling, and sensor configuration
- In-node scheduling: custom schedules are programmed to the node, with RTC built in each controller, schedules runs with or without wireless connectivity.
- Revenue grade energy metering
- Sensor input for motion or light sensing
- Linear continuous dimming - high resolution dimming (100+ steps)
- Reliable and encrypted communication
- Support over-the-air (OTA) updates to support future enhancements
- Flexible event based scheduling system
- Lighting fixture fault monitoring and reporting
- Self-forming and self-restoring wireless mesh network
- Integrates with MeshSmart LiteView and CityConnect

► **GLSN Controller**



► **Order Code**

Sample Order Code      GLSN-00-ZB-277-7-GRY

Series	Wireless Type	Input Voltage	Model	Color	Extra
GLSN-00	ZB (ZigBee)	(277) 120-277V   (480) 347-480V	5P: 5 Pins   7P: 7 Pins	GRY	L (built-in photocell)