

GLEDSL 40W

STRIP LIGHT SPECIFICATION SHEET



▼ CERTS



RoHS



▼ DIMENSIONS

4' FIXTURE

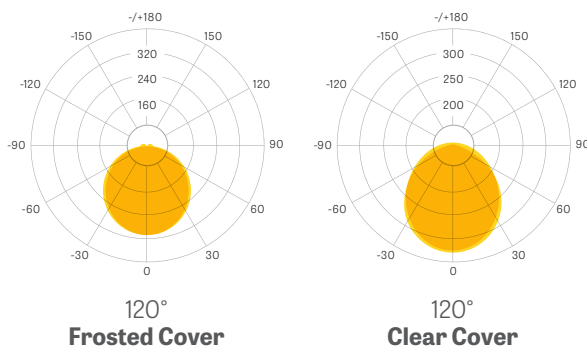


Length: 47.24 in (1200 mm)

Height: 2.165 in (55 mm)

Width: 3.27 in (83 mm)

▼ PHOTOMETRICS



▶ OPTICAL SPECS

System Efficacy	Up to 140 Lm/W
CCT	30K / 40K / 50K / 60K
CRI	> 80 Ra
Beam Angle	120°

▶ FROSTED COVER (FC)

Lumen Efficacy	Up to 118.57 Lm/W
Lumen Output	3,557 Lumens

▶ CLEAR COVER (CC)

Lumen Efficacy	Up to 142 Lm/W
Lumen Output	5,680 Lumens

▶ ELECTRICAL SPECS

Input Voltage	AC 100 - 277 Volts
Power Frequency	50 / 60 Hz
Power Factor	> 0.98
Efficiency	> 98%
Total Harmonic Distortion	< 20%
Dimming Function	0 - 10V

▶ OTHER DETAILS

System Power Usage	41.17 W
Ingress Protection	IP65
Luminaire Net Weight	3.3 Kg
Lifespan	≥ 50,000 Hours
Storage Temperature	-40° ~ 185°F (-40° ~ 85°C)
Operating Temperature	-4° ~ 104°F (-20° ~ 40°C)
Product Dimensions	47.24 x 2.48 x 3.27 in (1200 x 63 x 83 mm)
Cord Length	1 Meter

▶ CONTROLS & ACCESSORIES

Intelligent Control	Motion Sensor
Installation	Linkable Option

*Consult your GEL sales representative or the DLC QPL for specific model certifications.

After choosing options to create the perfect controlled fixture for your space, this chart will help you create the correct SKU necessary to order.

STRIP LIGHT

PRODUCT	WATTAGE	A CCT	B COVER	C FIXTURE LENGTH	D OPTIONS
GLEDSL	20W	30K / 40K / 50K / 60K	FC / CC	2	(N/A) / L / DM / LDM
GLEDSL	30W	30K / 40K / 50K / 60K	FC / CC	3	(N/A) / L / DM / LDM
GLEDSL	40W	30K / 40K / 50K / 60K	FC / CC	4	(N/A) / L / DM / LDM
GLEDSL	50W	30K / 40K / 50K / 60K	FC / CC	5	(N/A) / L / DM / LDM
GLEDSL	65W	30K / 40K / 50K / 60K	FC / CC	5	(N/A) / L / DM / LDM

Create your SKU:

GLEDSL

PRODUCT	WATTAGE	CCT	COVER	LENGTH (FIXED)	OPTIONS
---------	---------	-----	-------	----------------	---------

Accessory SKUs if applicable (separate by comma)

Fixture Quantity

SKU CREATOR GUIDELINES

- Options in chart separated by slash (/)
- Choose one option per column.
- All characters must **always** utilize capitalization. No special characters (/ , & , # , etc.) will be permitted.
- White space in between columns indicates single space in SKU.

SKU CREATOR CATEGORY KEY

To select standard fixture - leave **OPTIONS** column blank.

A CCT - COLOR TEMP.	B COVER	C FIXTURE LENGTH	D OPTIONS
30K - 3,000 Kelvin 40K - 4,000 Kelvin 50K - 5,000 Kelvin 60K - 6,000 Kelvin	FC - Frosted Cover CC - Clear Cover	2 - 20 watt, 2 ft. 3 - 30 watt, 3 ft. 4 - 40 watt, 4 ft. 5 - 50/65 watt, 5 ft.	(N/A) - Standard Body L - Linkable DM - Dimming/Motion LDM - Linkable/Dimming/Motion

ACCESSORY SKUS

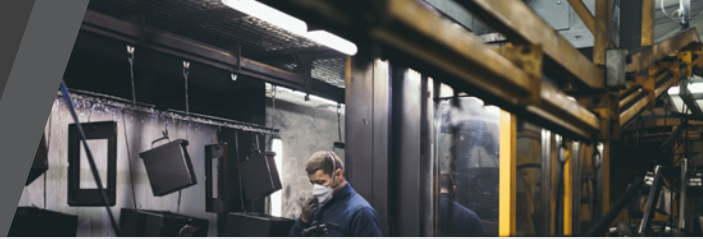
Order accessories as separate part number from your Fixture SKU. Learn more about these options on the Accessories Page.

MOUNTING
GLEDSL A 2M (2 Meter Cable Mount)

CORD & PLUG ENDS	
GLEDSL A 1.5 EXT (2.5m overall)	GLEDSL A L6-15P
GLEDSL A 5-15P	GLEDSL A L7-15P
GLEDSL A L5-15P	GLEDSL A L7-20P

NOTES

FIXTURE OPTIONS



CONTROL OPTIONS

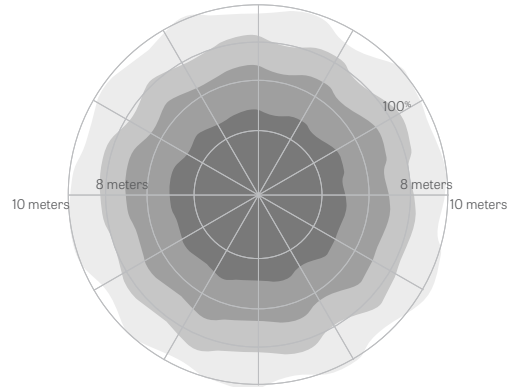
▶ DIMMING / MOTION SENSOR

(DM) (LDM) Order in Fixture SKU

The pre-installed motion sensor comes programmed to turn on to full bright once motion is detected. When no motion has been detected for ten minutes, the fixture will dim to 35% output and hold at dim state for ten minutes before shutting down completely.

The sensor comes pre-set to 100% detection area inside the fixture with a detection distance of up to 8 meters and recommended mounting height of no more than 6 meters.

▶ MOTION DETECTION RANGE



Ceiling Mounting Pattern
Suggested Installation Height: 2.5-6m

INSTALLATION OPTIONS

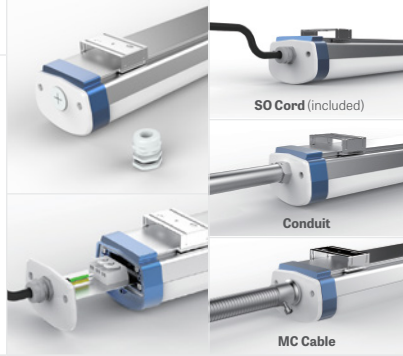
▶ LINKABLE LIGHTING

(L) FIXTURE SKU OPTION

PHOTO

GLEDSLA 1.5M EXT

The linking option comes pre-configured with through wiring and an extra IP-65 connector making connecting them in series a snap. The standard 1/2 KO will also easily accommodate common metal clad cable or rigid conduit installations.

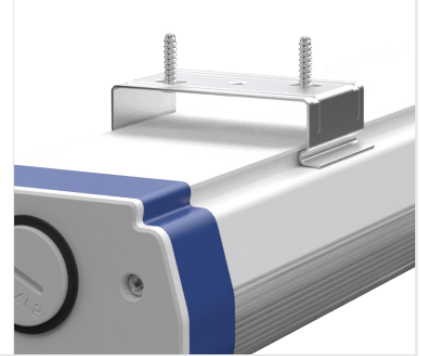


▶ CEILING MOUNT

NO SKU NECESSARY

PHOTO

Bracket, screws and anchor provided with fixture order.



▶ CORD & PLUGS

SKU	DESCRIPTION
GLEDSLA 1.5 EXT	1.5 Meter Cord Extension (2.5 Meter Overall)
GLEDSLA 5-15P	Straight Blade 120v NEMA 5-15 Plug End
GLEDSLA L5-15P	Twist Lock 120v NEMA L5-15 Plug End
GLEDSLA L6-15P	Twist Lock 120v NEMA L6-15 Plug End
GLEDSLA L7-15P	Twist Lock 208/240v NEMA L7-15 Plug End
GLEDSLA L7-20P	Twist Lock 277v NEMA L7-20 Plug End

▶ CABLE MOUNT

SKU

PHOTO

GLEDSLA 2M Cable Mount

Give your lighting setup an elegant, accented look by extending it from the ceiling with our 2-meter cable mount.

