

GLEDSL 20W

STRIP LIGHT SPECIFICATION SHEET



▼ CERTS



RoHS



▼ DIMENSIONS

2' FIXTURE

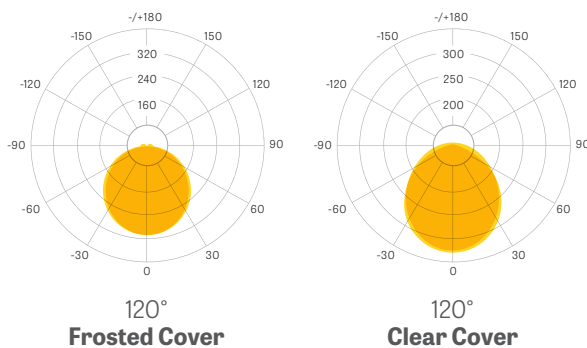


Length: 23.6 in (600 mm)

Height: 2.165 in (55 mm)

Width: 3.27 in (83 mm)

▼ PHOTOMETRICS



▶ OPTICAL SPECS

| | |
|-----------------|-----------------------|
| System Efficacy | Up to 140 Lm/W |
| CCT | 30K / 40K / 50K / 60K |
| CRI | > 80 Ra |
| Beam Angle | 120° |

▶ FROSTED COVER (FC)

| | |
|----------------|------------------|
| Lumen Efficacy | Up to 94.82 Lm/W |
| Lumen Output | 1,896 Lumens |

▶ CLEAR COVER (CC)

| | |
|----------------|----------------|
| Lumen Efficacy | Up to 142 Lm/W |
| Lumen Output | 2,840 Lumens |

▶ ELECTRICAL SPECS

| | |
|---------------------------|--------------------|
| Input Voltage | AC 100 - 277 Volts |
| Power Frequency | 50 / 60 Hz |
| Power Factor | > 0.98 |
| Efficiency | > 98% |
| Total Harmonic Distortion | < 20% |
| Dimming Function | 0 - 10V |

▶ OTHER DETAILS

| | |
|-----------------------|-------------------------------------------|
| System Power Usage | 20W |
| Ingress Protection | IP65 |
| Luminaire Net Weight | 1.9 Kg |
| Lifespan | ≥ 50,000 Hours |
| Storage Temperature | -40° ~ 185°F (-40° ~ 85°C) |
| Operating Temperature | -4° ~ 104°F (-20° ~ 40°C) |
| Product Dimensions | 23.62 x 2.48 x 3.27 in (600 x 63 x 83 mm) |
| Cord Length | 1 Meter |

▶ CONTROLS & ACCESSORIES

| | |
|---------------------|-----------------|
| Intelligent Control | Motion Sensor |
| Installation | Linkable Option |

*Consult your GEL sales representative or the DLC QPL for specific model certifications.

After choosing options to create the perfect controlled fixture for your space, this chart will help you create the correct SKU necessary to order.

STRIP LIGHT

| PRODUCT | WATTAGE | A CCT | B COVER | C FIXTURE LENGTH | D OPTIONS |
|---------|---------|-----------------------|---------|------------------|----------------------|
| GLEDSL | 20W | 30K / 40K / 50K / 60K | FC / CC | 2 | (N/A) / L / DM / LDM |
| GLEDSL | 30W | 30K / 40K / 50K / 60K | FC / CC | 3 | (N/A) / L / DM / LDM |
| GLEDSL | 40W | 30K / 40K / 50K / 60K | FC / CC | 4 | (N/A) / L / DM / LDM |
| GLEDSL | 50W | 30K / 40K / 50K / 60K | FC / CC | 5 | (N/A) / L / DM / LDM |
| GLEDSL | 65W | 30K / 40K / 50K / 60K | FC / CC | 5 | (N/A) / L / DM / LDM |

Create your SKU:

GLEDSL

| PRODUCT | WATTAGE | CCT | COVER | LENGTH (FIXED) | OPTIONS |
|---------|---------|-----|-------|----------------|---------|
|---------|---------|-----|-------|----------------|---------|

Accessory SKUs if applicable (separate by comma)

Fixture Quantity

SKU CREATOR GUIDELINES

- Options in chart separated by slash (/)
- Choose one option per column.
- All characters must **always** utilize capitalization. No special characters (/ , & , # , etc.) will be permitted.
- White space in between columns indicates single space in SKU.

SKU CREATOR CATEGORY KEY

To select standard fixture - leave **OPTIONS** column blank.

| A CCT - COLOR TEMP. | B COVER | C FIXTURE LENGTH | D OPTIONS |
|------------------------------------------------------------------------------------------------------------------|------------------------------------------------------|---------------------------------------------------------------------------------------------------------------------|--------------------------------------------------------------------------------------------------------------------|
| 30K - 3,000 Kelvin 40K - 4,000 Kelvin 50K - 5,000 Kelvin 60K - 6,000 Kelvin | FC - Frosted Cover CC - Clear Cover | 2 - 20 watt, 2 ft. 3 - 30 watt, 3 ft. 4 - 40 watt, 4 ft. 5 - 50/65 watt, 5 ft. | (N/A) - Standard Body L - Linkable DM - Dimming/Motion LDM - Linkable/Dimming/Motion |

ACCESSORY SKUS

Order accessories as separate part number from your Fixture SKU. Learn more about these options on the Accessories Page.

| MOUNTING |
|-----------------------------------|
| GLEDSL A 2M (2 Meter Cable Mount) |

| CORD & PLUG ENDS | |
|---------------------------------|-----------------|
| GLEDSL A 1.5 EXT (2.5m overall) | GLEDSL A L6-15P |
| GLEDSL A 5-15P | GLEDSL A L7-15P |
| GLEDSL A L5-15P | GLEDSL A L7-20P |

NOTES

FIXTURE OPTIONS



CONTROL OPTIONS

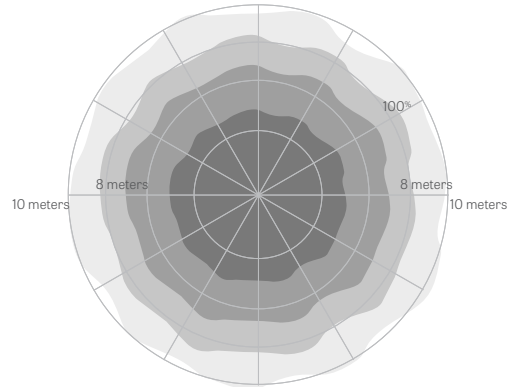
▶ DIMMING / MOTION SENSOR

(DM) (LDM) Order in Fixture SKU

The pre-installed motion sensor comes programmed to turn on to full bright once motion is detected. When no motion has been detected for ten minutes, the fixture will dim to 35% output and hold at dim state for ten minutes before shutting down completely.

The sensor comes pre-set to 100% detection area inside the fixture with a detection distance of up to 8 meters and recommended mounting height of no more than 6 meters.

▶ MOTION DETECTION RANGE



Ceiling Mounting Pattern
Suggested Installation Height: 2.5-6m

INSTALLATION OPTIONS

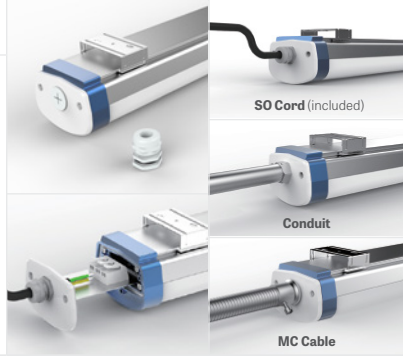
▶ LINKABLE LIGHTING

(L) FIXTURE SKU OPTION

PHOTO

GLEDSLA 1.5M EXT

The linking option comes pre-configured with through wiring and an extra IP-65 connector making connecting them in series a snap. The standard 1/2 KO will also easily accommodate common metal clad cable or rigid conduit installations.

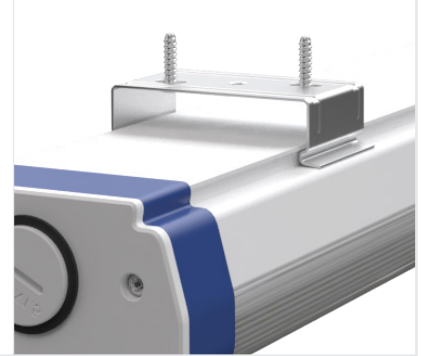


▶ CEILING MOUNT

NO SKU NECESSARY

PHOTO

Bracket, screws and anchor provided with fixture order.



▶ CORD & PLUGS

| SKU | DESCRIPTION |
|-----------------|----------------------------------------------|
| GLEDSLA 1.5 EXT | 1.5 Meter Cord Extension (2.5 Meter Overall) |
| GLEDSLA 5-15P | Straight Blade 120v NEMA 5-15 Plug End |
| GLEDSLA L5-15P | Twist Lock 120v NEMA L5-15 Plug End |
| GLEDSLA L6-15P | Twist Lock 120v NEMA L6-15 Plug End |
| GLEDSLA L7-15P | Twist Lock 208/240v NEMA L7-15 Plug End |
| GLEDSLA L7-20P | Twist Lock 277v NEMA L7-20 Plug End |

▶ CABLE MOUNT

SKU

PHOTO

GLEDSLA 2M Cable Mount

Give your lighting setup an elegant, accented look by extending it from the ceiling with our 2-meter cable mount.

