

GLEDHM 200W

HIGH MAST AREA LIGHT SPECIFICATION SHEET



▼ CERTS

RoHS



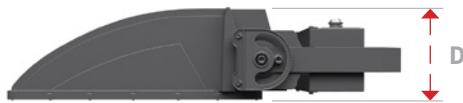
▼ DIMENSIONS



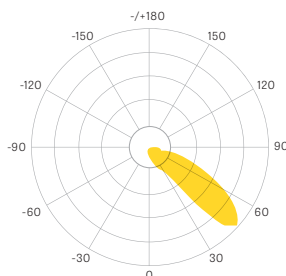
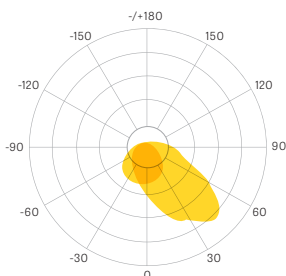
◀ Width 10.236 in (260 mm)

▼ Height 15.827 in (402 mm)

◀ Depth 5.984 in (152 mm)



▼ PHOTOMETRICS



▶ OPTICAL SPECS

Max System Efficacy	122 Lm/W
Max Lumen Output	25,422 Lumens
CCT	30K / 40K / 50K / 57K
CRI	> 69 Ra
Beam Angle	75 degrees

▶ ELECTRICAL SPECS

System Power Usage	200W
Input Voltage	AC 100 – 277 Volts
Power Frequency	50 / 60 Hz
Power Factor	> 0.99
Total Harmonic Distortion	< 19%

▶ OTHER DETAILS

Fixture Material	Aluminum
Ingress Protection	IP65
Luminaire Net Weight	25.35 lbs (11.5 kgs)
Lifespan	≥ 50,000 Hours
Product Dimensions	10.236 x 15.827 x 5.984 in (260 x 402 x 152 mm)
Intelligent Controls	Photocell Integration

After choosing options to create the perfect controlled fixture for your space, use this chart to create your ordering SKU.

HIGH MAST

PRODUCT	WATTAGE	CCT
GLEDHM	100W	30K / 40K / 50K / 57K
GLEDHM	150W	30K / 40K / 50K / 57K
GLEDHM	200W	30K / 40K / 50K / 57K
GLEDHM	300W	30K / 40K / 50K / 57K
GLEDHM	400W	30K / 40K / 50K / 57K
GLEDHM	500W	30K / 40K / 50K / 57K
GLEDHM	600W	30K / 40K / 50K / 57K

Create your SKU:

GLEDHM		
PRODUCT	WATTAGE	CCT
Accessory SKUs if applicable		Fixture Quantity

SKU CREATOR GUIDELINES

- Options in chart separated by slash (/)
- Choose one option per column.
- All characters must **always** utilize capitalization. No special characters (/ , & , #, etc.) will be permitted.
- White space in between columns indicates single space in SKU.

SKU CREATOR CATEGORY KEY

CCT - COLOR TEMPERATURE

30K - 3,000 Kelvin	50K - 5,000 Kelvin
40K - 4,000 Kelvin	57K - 5,700 Kelvin

ADJUSTABLE MOUNT

Order accessories as separate part number from your Fixture SKU. Learn more about these options on the Accessories Page.



Adjustable loop mounting bracket rotates 180° for convenient optical control and easy replacement of existing fixture installations.

